



15660 N. Dallas Parkway  
Suite 200  
Dallas, TX 75248

## ACKNOWLEDGMENT OF COMPLETION

Core5 Logistics Center at Bonnie View  
4450 Logistics Dr  
Dallas, TX 75241

By signing below, each party acknowledges that the Project named above is complete and that all improvements are accepted. Ware Malcomb, the Project Architect, has signed and provided the attached G704 Certificate of Substantial Completion to acknowledge that the Project Punch List has been perfected and the Project is Substantially Complete.


### General Contractor: Evans General Contractors, LLC

Ronnie Cupp, SVP

8/24/2022

Printed Name and Title

Date

  
Signature


### Owner: C5LC at Bonnie View, LLC

Kevin Green, VP Development

August 24, 2022

Printed Name and Title

Date

  
Signature

### Tenant: KeHE Distributors, LLC

BRIDN FREESE

Printed Name and Title  
DIR, CONSTRUCTION + INFRASTRUCTURE

11/15/22

Signature



# **AIA® Document G704® – 2017**

## **Certificate of Substantial Completion**

|  |  |  |
|--|--|--|
| <b>PROJECT: (name and address)</b><br>KeHe Dallas<br>4450 Logistics Drive<br>Dallas, Texas 75241   | <b>CONTRACT INFORMATION:</b><br>Contract For: Architectural Design & Engineering Services<br>Date: May 1, 2020   | <b>CERTIFICATE INFORMATION:</b><br>Certificate Number: 001<br>Date: April 20, 2022   |
| <b>OWNER: (name and address)</b><br>Core5 Industrial Partners LLC or its assigned<br>1230 Peachtree Street<br>Suite 3560<br>Atlanta, Georgia 30309 | <b>ARCHITECT: (name and address)</b><br>Ware Malcomb<br>1315 22 <sup>nd</sup> Street #410<br>Oak Brook, IL 60523 | <b>CONTRACTOR: (name and address)</b><br>Evans General Contractors<br>3050 Northwinds Parkway<br>Suite 200<br>Alpharetta, GA 30009 |

The Work identified below has been reviewed and found, to the Architect's best knowledge, information, and belief, to be substantially complete. Substantial Completion is the stage in the progress of the Work when the Work or designated portion is sufficiently complete in accordance with the Contract Documents so that the Owner can occupy or utilize the Work for its intended use. The date of Substantial Completion of the Project or portion designated below is the date established by this Certificate.

The entire scope of the Work, as described in the Contract Documents listed on Schedule 1 to this certification.

Ware Malcomb  
**ARCHITECT (Firm Name)**

  
**SIGNATURE**

Michael Cody, Studio  
 Manager  
**PRINTED NAME AND TITLE**

April 21, 2022

**DATE OF SUBSTANTIAL COMPLETION**

### **WARRANTIES**

The date of Substantial Completion of the Project or portion designated above is also the date of commencement of applicable warranties required by the Contract Documents, except as stated below:

*(Identify warranties that do not commence on the date of Substantial Completion, if any, and indicate their date of commencement.)*

None.

### **WORK TO BE COMPLETED OR CORRECTED**

A list of items to be completed or corrected is attached hereto, or transmitted as agreed upon by the parties, and identified as follows:  
*(Identify the list of Work to be completed or corrected.)*

None.

The failure to include any items on such list does not alter the responsibility of the Contractor to complete all Work in accordance with the Contract Documents. Unless otherwise agreed to in writing, the date of commencement of warranties for items on the attached list will be the date of issuance of the final Certificate of Payment or the date of final payment, whichever occurs first. The Contractor will complete or correct the Work on the list of items attached hereto within ( ) days from the above date of Substantial Completion.

Cost estimate of Work to be completed or corrected: \$ 0.00 All items listed in Exhibit A - Punch List have been completed or corrected.

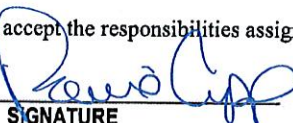
The responsibilities of the Owner and Contractor for security, maintenance, heat, utilities, damage to the Work, insurance, and other items identified below shall be as follows:

*(Note: Owner's and Contractor's legal and insurance counsel should review insurance requirements and coverage.)*

The Owner and Contractor hereby accept the responsibilities assigned to them in this Certificate of Substantial Completion:

Evans General Contractors  
**CONTRACTOR (Firm Name)**

Core5 Industrial Partners, LLC  
**OWNER (Firm Name)**

  
**SIGNATURE**

  
**SIGNATURE**

  
**PRINTED NAME AND TITLE**

Kevin Green, VP Development  
**PRINTED NAME AND TITLE**

8/24/22  
**DATE**

08/24/2022  
**DATE**

EXHIBIT A  
PUNCH LIST

KeHE Dallas

Prepared by Mike Piraino  
Jun 3, 2022

Description

44 tasks in this report.

Contents

#1 General..... 3

#2 General..... 4

#3 General..... 5

#4 General..... 6

#5 General..... 7

#6 General..... 8

#7 General..... 9

#8 General..... 10

#9 General..... 11

#10 General..... 12

#11 General ..... 13

#12 General ..... 14

#13 General..... 15

#14 General..... 16

#15 General..... 17

#16 General..... 18

#17 General..... 19

#18 General..... 20

#19 General..... 21

#20 General..... 22

#21 General..... 23

#22 General..... 24

#23 General..... 25

#24 General..... 26

#25 General..... 27

#26 General..... 28

#27 General..... 29

#28 General..... 30

#29 General..... 31

#30 General..... 32

#31 General..... 33

#32 General..... 34

#33 General..... 35

#34 General..... 36

#35 General..... 37

#36 General..... 38

#37 General..... 39

#38 General..... 40

#54 General..... 41

#55 General..... 41

#56 General..... 41

#57 General..... 42

#58 General..... 42

#59 General..... 43

## #1 General

### Status

Open

### Created

Jun 1, 2022 12:53 PM  
mpiraino@waremalcomb.com

### Sheet

A6.1

### Type

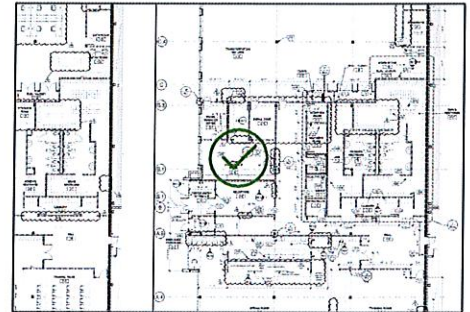
Issue

### Last Updated

Jun 1, 2022 12:55 PM

### List

Punch List



### Description

Offset grid. Move grille to full tile and align grid. Water damaged tile.

### Photos



20220601\_125530\_photo

Mike Piraino

Jun 1, 2022 12:55 PM

## #2 General

### Status

Open

### Created

Jun 1, 2022 12:55 PM  
mpiraino@waremalcomb.com

### Sheet

A6.1

### Type

Issue

### Last Updated

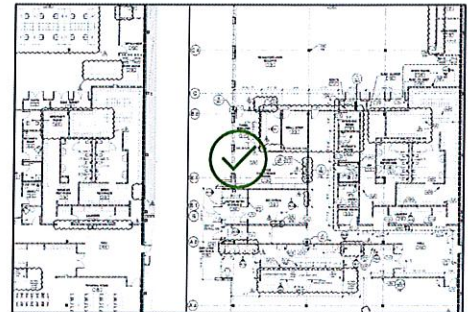
Jun 1, 2022 12:58 PM

### List

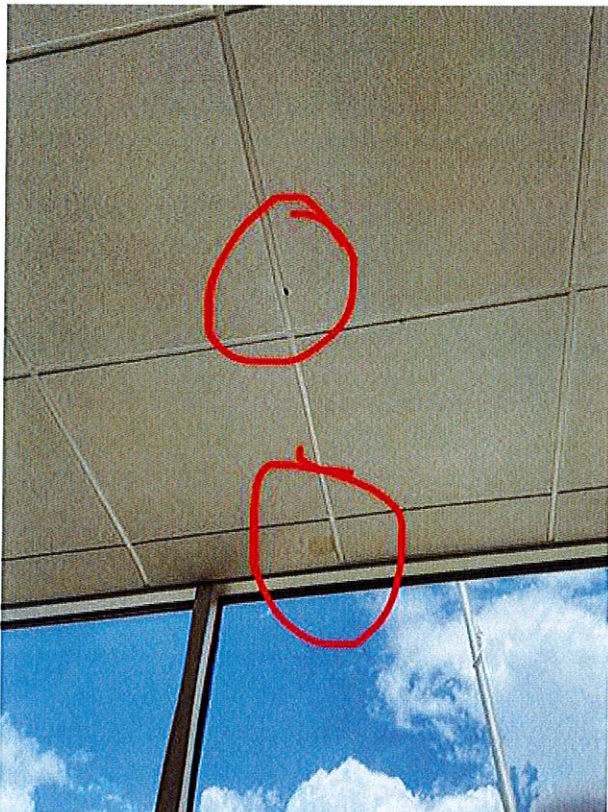
Punch List

### Description

Damaged tiles. Water stains.



### Photos



20220601\_125631\_photo

Mike Piraino

Jun 1, 2022 12:56 PM

### #3 General

**Status**

Open

**Created**

Jun 1, 2022 12:58 PM  
mpiraino@waremalcomb.co  
m

**Sheet**

A6.1

**Type**

Issue

**Last Updated**

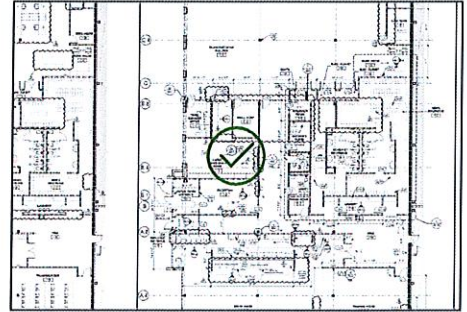
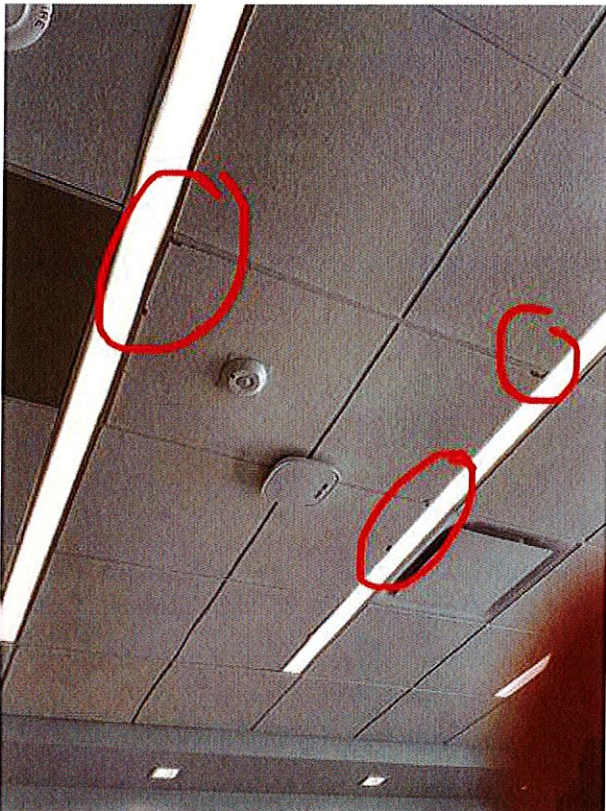
Jun 1, 2022 1:21 PM

**List**

Punch List

**Description**

General ceiling note.  
Replace damaged ceiling  
tiles.

**Photos**

20220601\_125854\_photo

Mike Piraino

Jun 1, 2022 12:59 PM

## #4 General

### Status

Open

### Created

Jun 1, 2022 1:00 PM  
mpiraino@waremalcomb.com

### Sheet

A6.1

### Type

Issue

### Last Updated

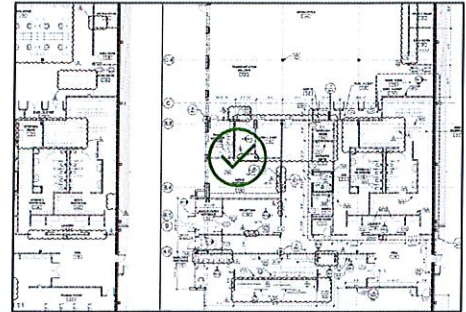
Jun 1, 2022 1:01 PM

### List

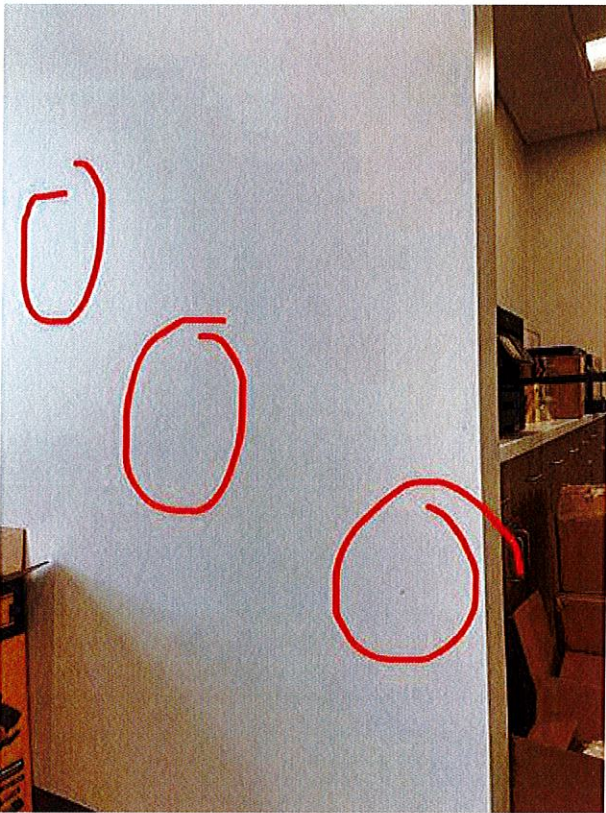
Punch List

### Description

General note. Paint touch ups.



### Photos



20220601\_130121\_photo

Mike Piraino

Jun 1, 2022 1:01 PM

## #5 General

### Status

Open

### Created

Jun 1, 2022 1:02 PM  
mpiraino@waremalcomb.com

### Sheet

A6.1

### Type

Issue

### Last Updated

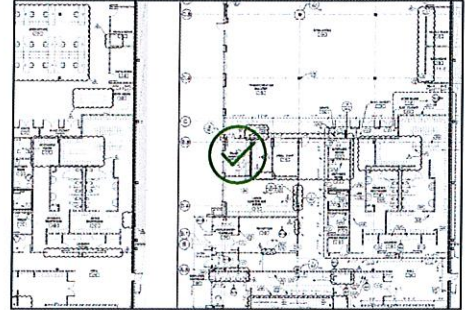
Jun 1, 2022 1:02 PM

### List

Punch List

### Description

Scuff on fixture



### Photos



20220601\_130234\_photo

Mike Piraino

Jun 1, 2022 1:02 PM

## #6 General

### Status

Open

### Created

Jun 1, 2022 1:05 PM  
mpiraino@waremalcomb.co  
m

### Sheet

A6.1

### Type

Issue

### List

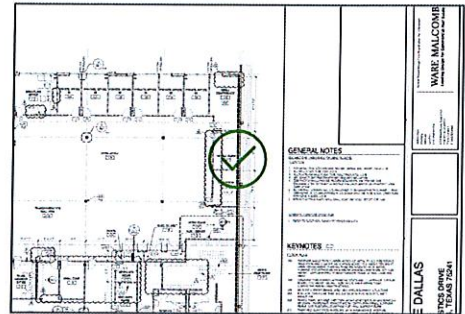
Punch List

### Description

Reset tiles

### Last Updated

Jun 1, 2022 1:06 PM



### Photos



20220601\_130603\_photo

Mike Piraino

Jun 1, 2022 1:06 PM

## #7 General

### Status

Open

### Created

Jun 1, 2022 1:08 PM  
mpiraino@waremalcomb.co  
m

### Sheet

A6.1

### Type

Issue

### Last Updated

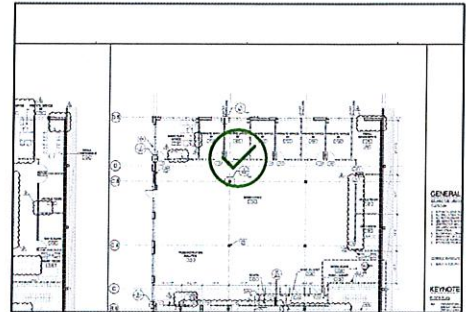
Jun 1, 2022 1:09 PM

### List

Punch List

### Description

Clean up door frame



### Photos



20220601\_130905\_photo

Mike Piraino

Jun 1, 2022 1:09 PM

## #8 General

### Status

Open

### Created

Jun 1, 2022 1:10 PM  
mpiraino@waremalcomb.co  
m

### Sheet

A6.1

### Type

Issue

### Last Updated

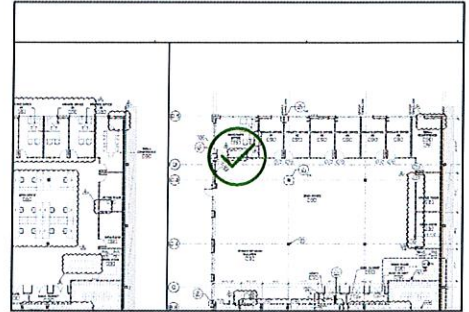
Jun 1, 2022 1:10 PM

### List

Punch List

### Description

Install cover plate



### Photos



20220601\_131026\_photo

Mike Piraino

Jun 1, 2022 1:10 PM

## #9 General

### Status

Open

### Created

Jun 1, 2022 1:10 PM  
mpiraino@waremalcomb.co  
m

### Sheet

A6.1

### Type

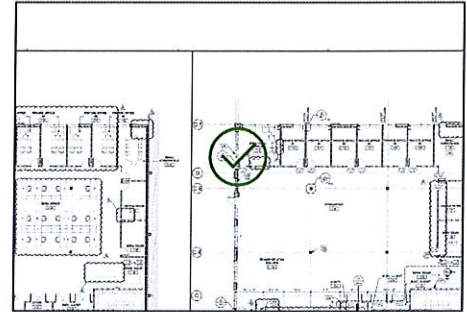
Issue

### Last Updated

Jun 1, 2022 1:11 PM

### List

Punch List



### Description

Install floor stop.

### Photos



20220601\_131116\_photo

Mike Piraino

Jun 1, 2022 1:11 PM

## #10 General

### Status

Open

### Created

Jun 1, 2022 1:11 PM  
mpiraino@waremalcomb.com

### Sheet

A6.1

### Type

Issue

### Last Updated

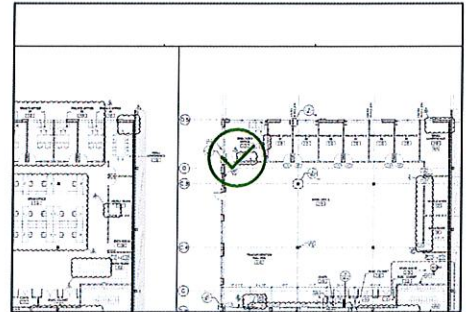
Jun 1, 2022 1:12 PM

### List

Punch List

### Description

Paint touch up



### Photos



20220601\_131153\_photo

Mike Piraino

Jun 1, 2022 1:11 PM

## #11 General

### Status

Open

### Created

Jun 1, 2022 1:12 PM  
mpiraino@waremalcomb.com

### Sheet

A6.1

### Type

Issue

### Last Updated

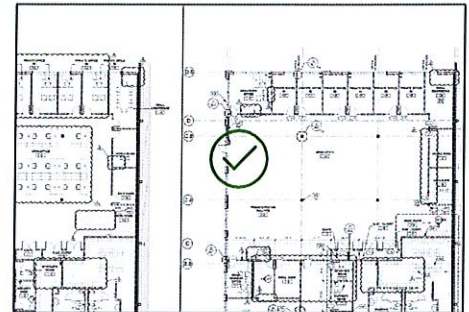
Jun 1, 2022 1:21 PM

### List

Punch List

### Description

Scuffed tile.



### Photos



20220601\_131242\_photo

Mike Piraino

Jun 1, 2022 1:12 PM

## #12 General

### Status

Open

### Created

Jun 1, 2022 1:14 PM  
mpiraino@waremalcomb.co  
m

### Sheet

A6.1

### Type

Issue

### Last Updated

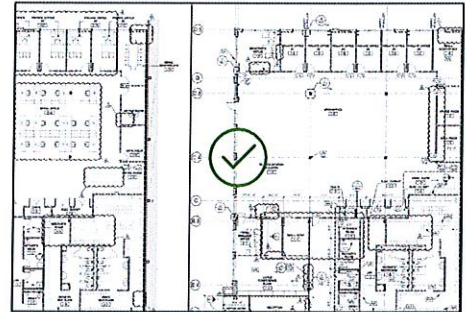
Jun 1, 2022 1:15 PM

### List

Punch List

### Description

Paint touch up



### Photos



20220601\_131323\_photo

Mike Piraino

Jun 1, 2022 1:13 PM

## #13 General

### Status

Open

### Created

Jun 1, 2022 1:15 PM  
mpiraino@waremalcomb.co  
m

### Sheet

A6.1

### Type

Issue

### Last Updated

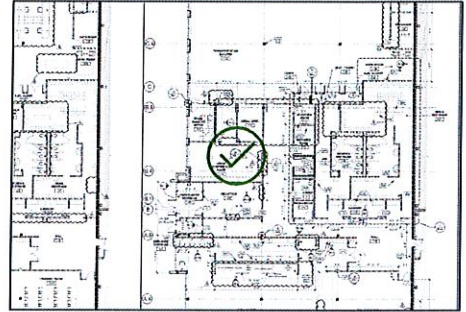
Jun 1, 2022 1:17 PM

### List

Punch List

### Description

Patch/infill concrete.



### Photos



20220601\_131630\_photo

Mike Piraino

Jun 1, 2022 1:16 PM

## #14 General

### Status

Open

### Created

Jun 1, 2022 1:50 PM  
mpiraino@waremalcomb.co  
m

### Sheet

A6.1

### Type

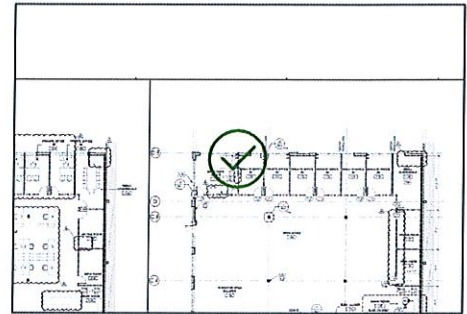
Issue

### List

Punch List

### Description

Patch cabinet holes



### Photos



20220601\_135101\_photo

Mike Piraino

Jun 1, 2022 1:51 PM

## #15 General

### Status

Open

### Created

Jun 1, 2022 1:54 PM  
mpiraino@waremalcomb.co  
m

### Sheet

A6.1

### Type

Issue

### List

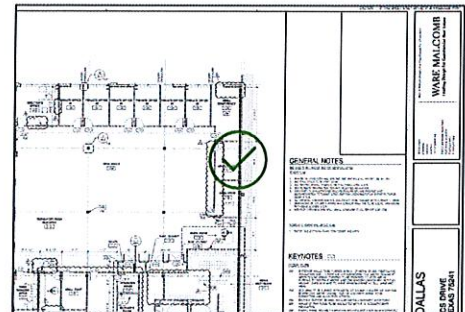
Punch List

### Description

Install cap

### Last Updated

Jun 1, 2022 1:55 PM



### Photos



20220601\_135440\_photo

Mike Piraino

Jun 1, 2022 1:54 PM

## #16 General

### Status

Open

### Created

Jun 1, 2022 1:55 PM  
mpiraino@waremalcomb.co  
m

### Sheet

A6.1

### Type

Issue

### Last Updated

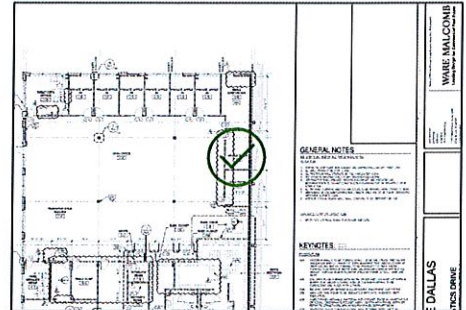
Jun 1, 2022 1:55 PM

### List

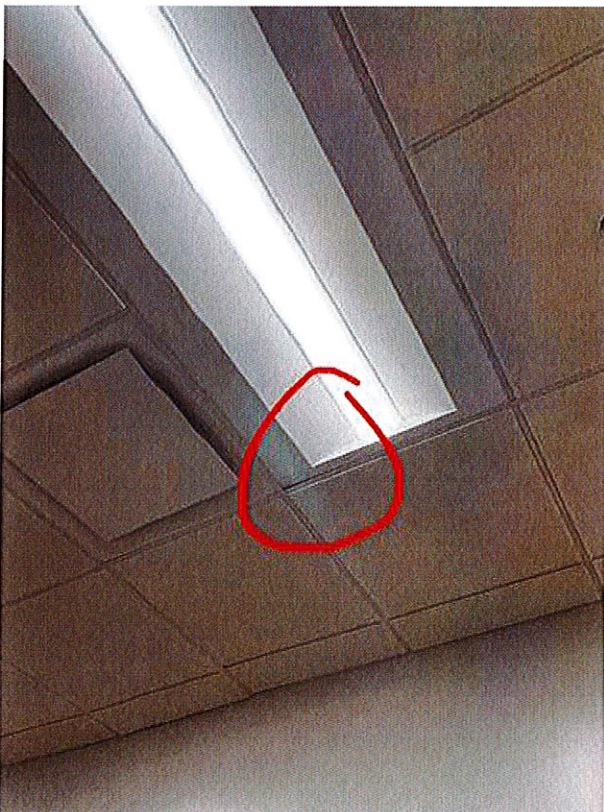
Punch List

### Description

Misaligned fixture



### Photos



20220601\_135531\_photo

Mike Piraino

Jun 1, 2022 1:55 PM

## #17 General

### Status

Open

### Type

Issue

### List

Punch List

### Description

Patch. Through out

### Created

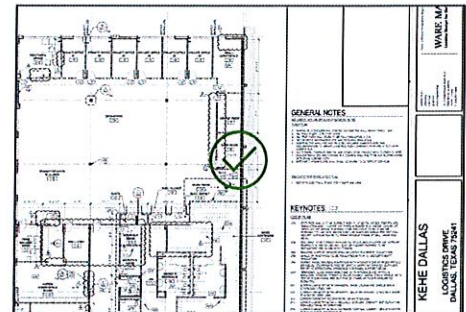
Jun 1, 2022 1:56 PM  
mpiraino@waremalcomb.co  
m

### Last Updated

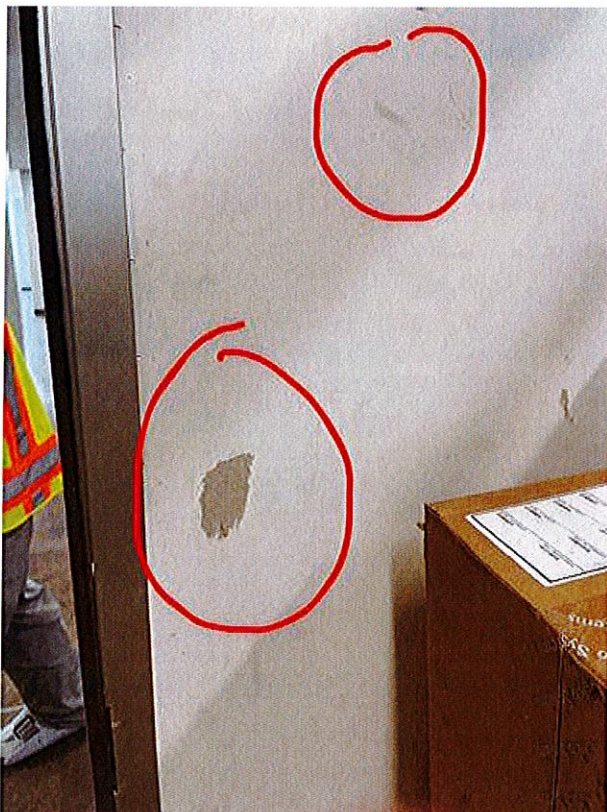
Jun 1, 2022 1:57 PM

### Sheet

A6.1



### Photos



20220601\_135641\_photo

Mike Piraino

Jun 1, 2022 1:56 PM

## #18 General

### Status

Open

### Created

Jun 1, 2022 2:02 PM  
mpiraino@waremalcomb.co  
m

### Sheet

A6.1

### Type

Issue

### Last Updated

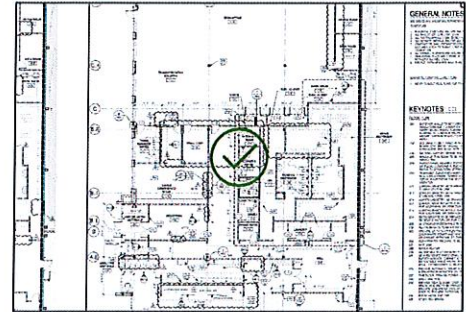
Jun 1, 2022 2:02 PM

### List

Punch List

### Description

Touch up



### Photos



20220601\_140227\_photo

Mike Piraino

Jun 1, 2022 2:02 PM

## #19 General

### Status

Open

### Created

Jun 1, 2022 2:02 PM  
mpiraino@waremalcomb.co  
m

### Sheet

A6.1

### Type

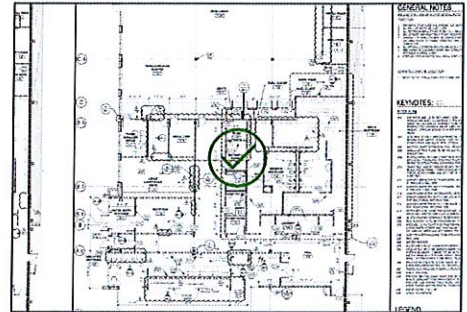
Issue

### List

Punch List

### Last Updated

Jun 1, 2022 2:03 PM



### Description

Gaps in ceiling tiles

### Photos



20220601\_140304\_photo

Mike Piraino

Jun 1, 2022 2:03 PM

## #20 General

### Status

Open

### Created

Jun 1, 2022 2:06 PM  
mpiraino@waremalcomb.co  
m

### Sheet

A6.1

### Type

Issue

### Last Updated

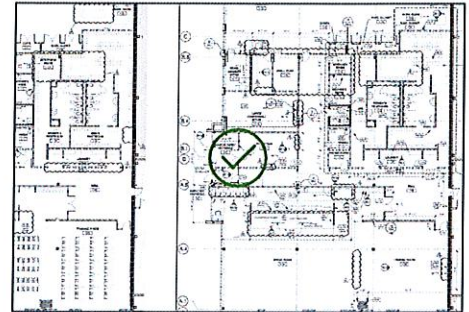
Jun 1, 2022 2:06 PM

### List

Punch List

### Description

Missing door



### Photos



20220601\_140616\_photo

Mike Piraino

Jun 1, 2022 2:06 PM

## #21 General

### Status

Open

### Created

Jun 1, 2022 2:06 PM  
mpiraino@waremalcomb.co  
m

### Sheet

A6.1

### Type

Issue

### Last Updated

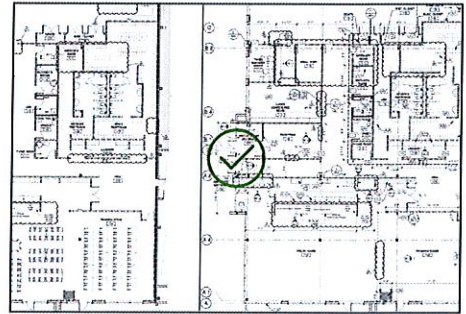
Jun 1, 2022 2:07 PM

### List

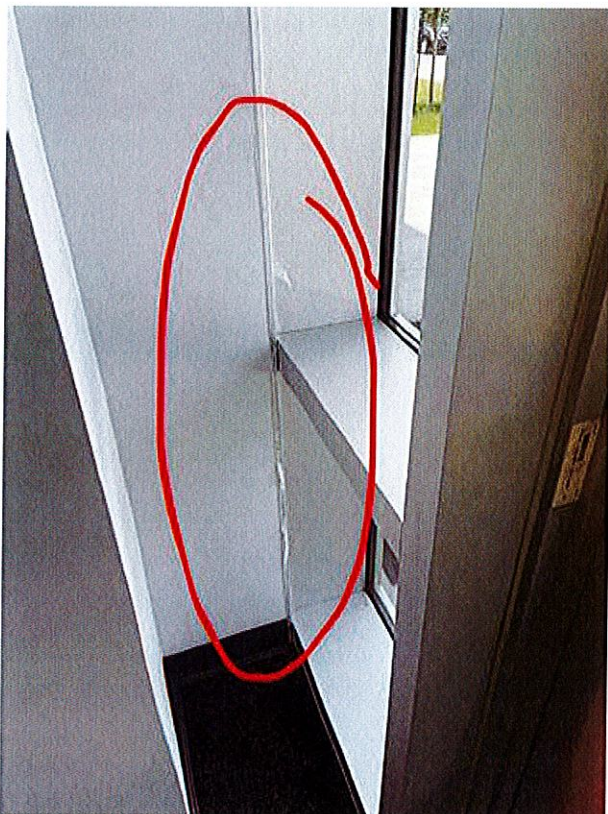
Punch List

### Description

Clean up plastic covering



### Photos



20220601\_140650\_photo

Mike Piraino

Jun 1, 2022 2:06 PM

## #22 General

### Status

Open

### Created

Jun 1, 2022 2:07 PM  
mpiraino@waremalcomb.com

### Sheet

A6.1

### Type

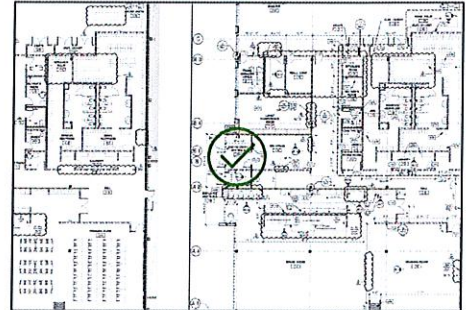
Issue

### Last Updated

Jun 1, 2022 2:07 PM

### List

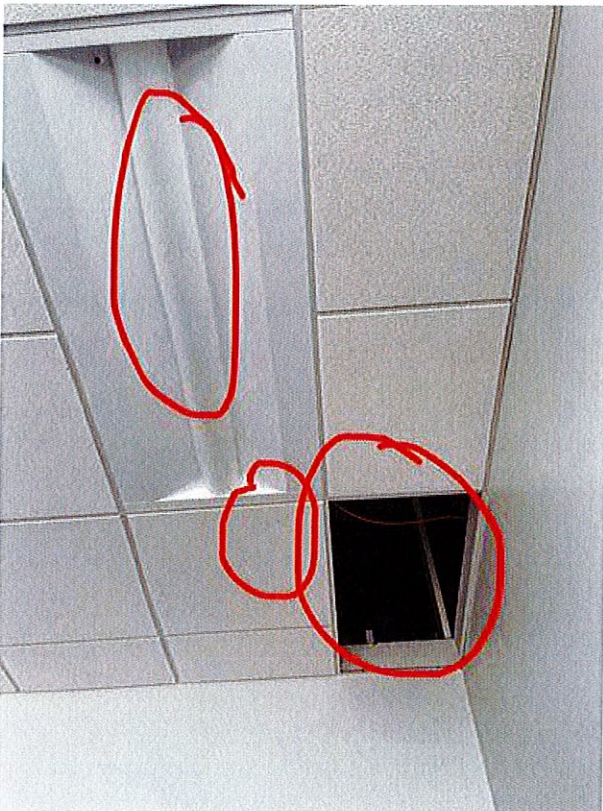
Punch List



### Description

Clean up fixture. Scuffed tile.  
Install final tile

### Photos



20220601\_140741\_photo

Mike Piraino

Jun 1, 2022 2:07 PM

## #23 General

### Status

Open

### Created

Jun 1, 2022 2:08 PM  
mpiraino@waremalcomb.co  
m

### Sheet

A6.1

### Type

Issue

### Last Updated

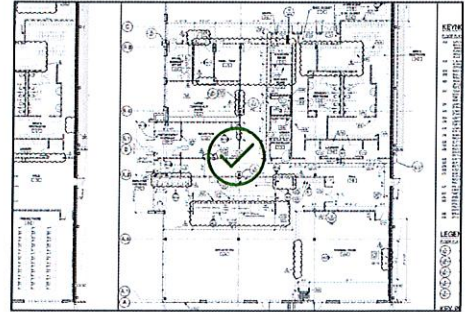
Jun 1, 2022 2:08 PM

### List

Punch List

### Description

Touch up



### Photos



20220601\_140843\_photo

Mike Piraino

Jun 1, 2022 2:08 PM

## #24 General

### Status

Open

### Created

Jun 1, 2022 2:09 PM  
mpiraino@waremalcomb.co  
m

### Sheet

A6.1

### Type

Issue

### Last Updated

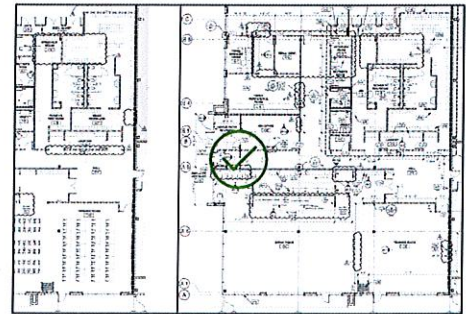
Jun 1, 2022 2:09 PM

### List

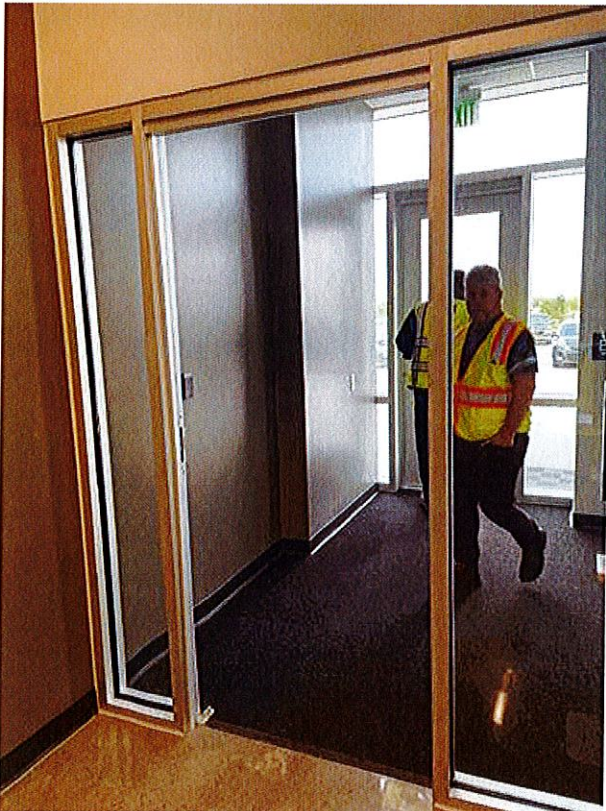
Punch List

### Description

Missing door.



### Photos



20220601\_140944\_photo

Mike Piraino

Jun 1, 2022 2:09 PM

## #25 General

### Status

Open

### Created

Jun 1, 2022 2:10 PM  
mpiraino@waremalcomb.co  
m

### Sheet

A6.1

### Type

Issue

### Last Updated

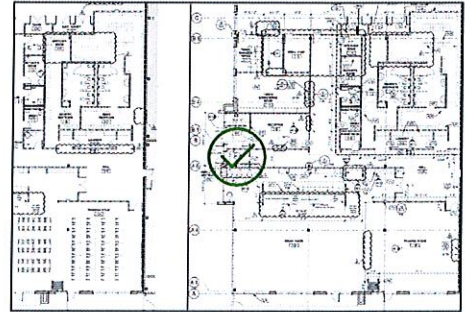
Jun 1, 2022 2:10 PM

### List

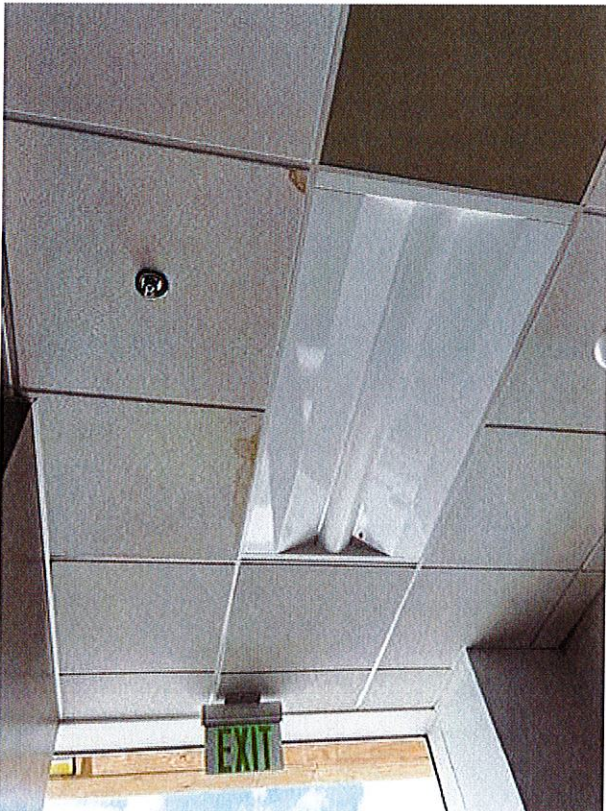
Punch List

### Description

Water stained tiles.



### Photos



20220601\_141019\_photo

Mike Piraino

Jun 1, 2022 2:10 PM

## #26 General

### Status

Open

### Created

Jun 1, 2022 2:10 PM  
mpiraino@waremalcomb.co  
m

### Sheet

A6.1

### Type

Issue

### Last Updated

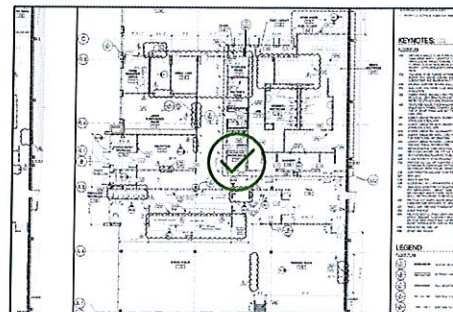
Jun 1, 2022 2:11 PM

### List

Punch List

### Description

Reset light



### Photos



20220601\_141107\_photo

Mike Piraino

Jun 1, 2022 2:11 PM

## #27 General

### Status

Open

### Created

Jun 1, 2022 2:12 PM  
mpiraino@waremalcomb.com

### Sheet

A6.1

### Type

Issue

### Last Updated

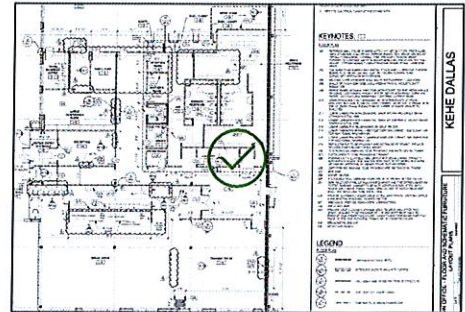
Jun 1, 2022 2:12 PM

### List

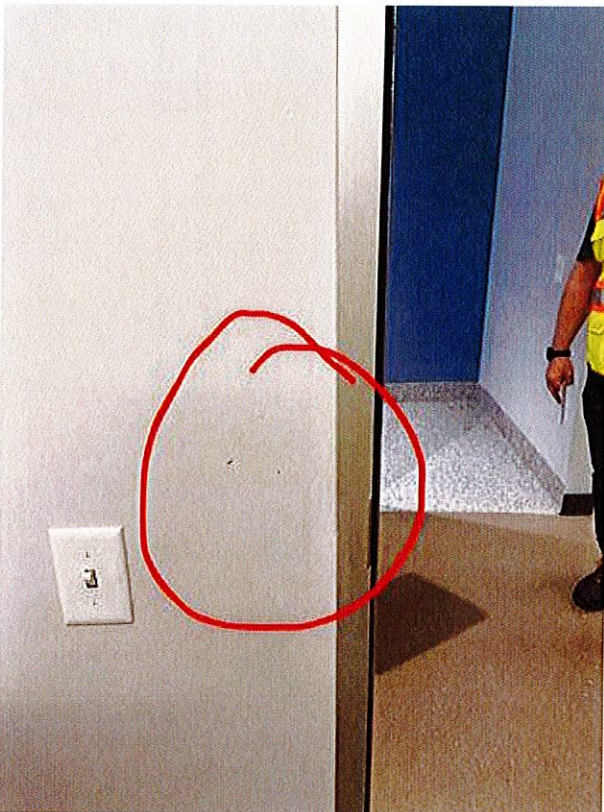
Punch List

### Description

Patch. Paint.



### Photos



20220601\_141218\_photo

Mike Piraino

Jun 1, 2022 2:12 PM

## #28 General

### Status

Open

### Type

Issue

### List

Punch List

### Description

Install cap and better caps  
on sink.

### Photos



20220601\_141421\_photo

Mike Piraino

Jun 1, 2022 2:14 PM

### Created

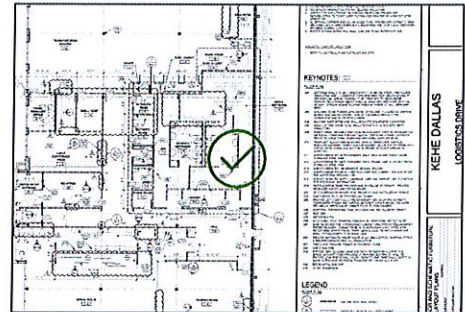
Jun 1, 2022 2:14 PM  
mpiraino@waremalcomb.co  
m

### Last Updated

Jun 1, 2022 2:15 PM

### Sheet

A6.1



## #29 General

### Status

Open

### Created

Jun 1, 2022 2:15 PM  
mpiraino@waremalcomb.co  
m

### Sheet

A6.1

### Type

Issue

### Last Updated

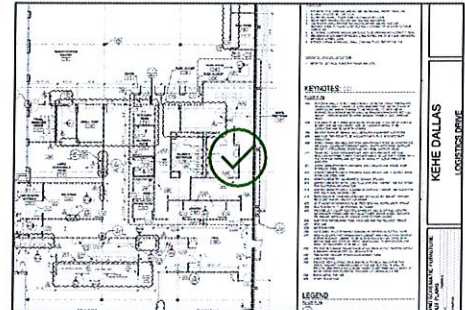
Jun 2, 2022 9:30 AM

### List

Punch List

### Description

Linear light fixture missing



### Photos



20220601\_141512\_photo

Mike Piraino

Jun 1, 2022 2:15 PM

## #30 General

### Status

Open

### Created

Jun 1, 2022 2:16 PM  
mpiraino@waremalcomb.co  
m

### Sheet

A6.1

### Type

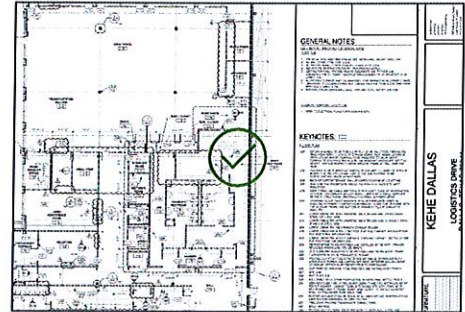
Issue

### List

Punch List

### Last Updated

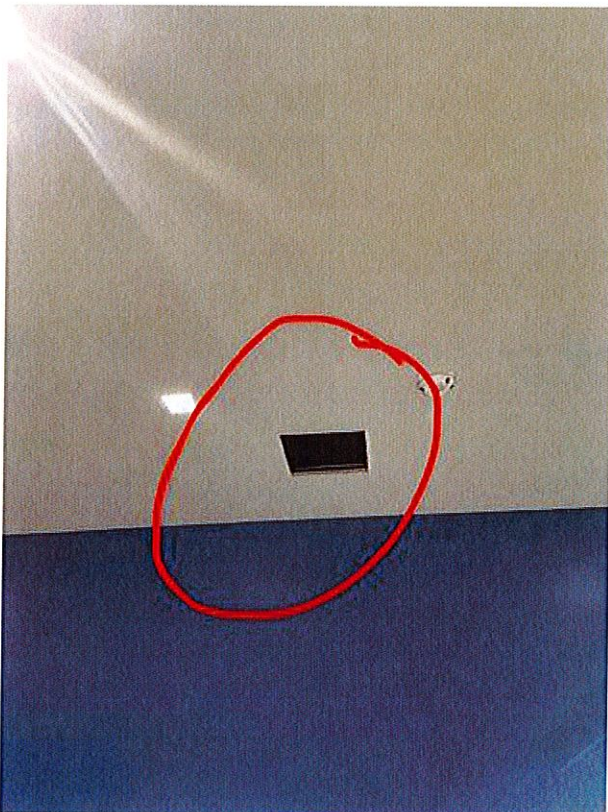
Jun 1, 2022 2:17 PM



### Description

Access panel cover

### Photos



20220601\_141655\_photo

Mike Piraino

Jun 1, 2022 2:16 PM

## #31 General

### Status

Open

### Created

Jun 1, 2022 2:18 PM  
mpiraino@waremalcomb.com

### Sheet

A6.1

### Type

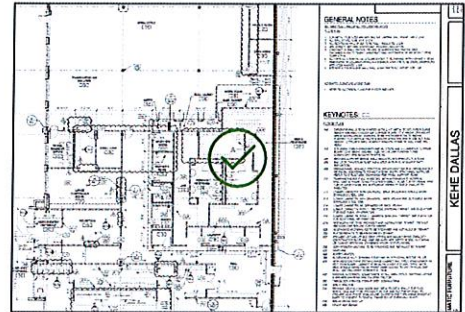
Issue

### List

Punch List

### Last Updated

Jun 1, 2022 2:20 PM



### Description

Epoxy base at end

### Photos



20220601\_141843\_photo

Mike Piraino

Jun 1, 2022 2:18 PM

## #32 General

### Status

Open

### Created

Jun 1, 2022 2:20 PM  
mpiraino@waremalcomb.com

### Sheet

A6.1

### Type

Issue

### Last Updated

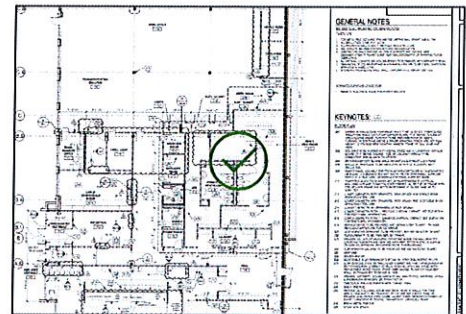
Jun 1, 2022 2:21 PM

### List

Punch List

### Description

Patch paint wall.



### Photos



20220601\_141917\_photo

Mike Piraino

Jun 1, 2022 2:19 PM

## #33 General

### Status

Open

### Created

Jun 1, 2022 2:21 PM  
mpiraino@waremalcomb.co  
m

### Sheet

A6.1

### Type

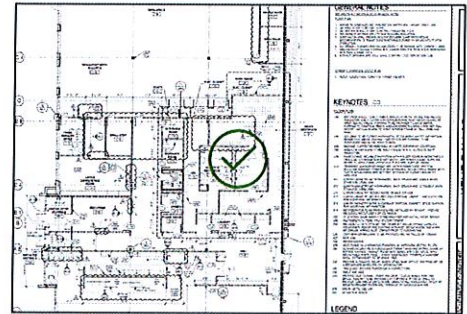
Issue

### List

Punch List

### Last Updated

Jun 1, 2022 2:21 PM



### Description

Clean partition.

### Photos



20220601\_141940\_photo

Mike Piraino

Jun 1, 2022 2:19 PM

## #34 General

### Status

Open

### Created

Jun 1, 2022 2:25 PM  
mpiraino@waremalcomb.co  
m

### Sheet

A6.1

### Type

Issue

### Last Updated

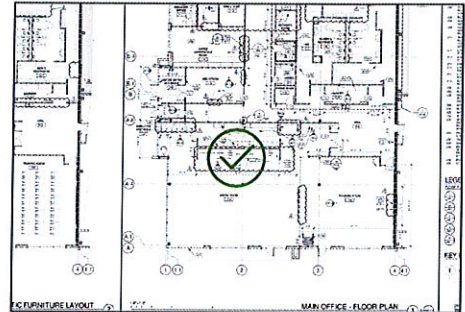
Jun 1, 2022 2:26 PM

### List

Punch List

### Description

Complete soffit paint detail.  
Colored curved stripes.



### Photos



20220601\_142550\_photo

Mike Piraino

Jun 1, 2022 2:25 PM

## #35 General

### Status

Open

### Created

Jun 1, 2022 2:28 PM  
mpiraino@waremalcomb.com

### Sheet

A6.1

### Type

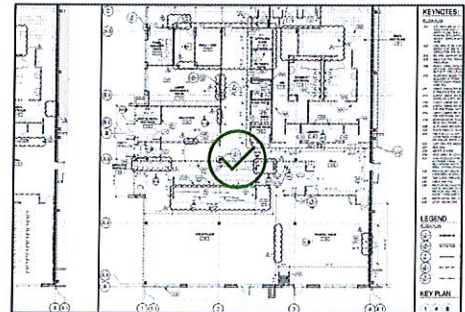
Issue

### List

Punch List

### Last Updated

Jun 1, 2022 2:29 PM



### Description

Hallway. Curved colored stripes not yet painted.

### Photos



20220601\_142912\_photo

Mike Piraino

Jun 1, 2022 2:29 PM

## #36 General

### Status

Open

### Created

Jun 1, 2022 2:29 PM  
mpiraino@waremalcomb.co  
m

### Sheet

A6.1

### Type

Issue

### Last Updated

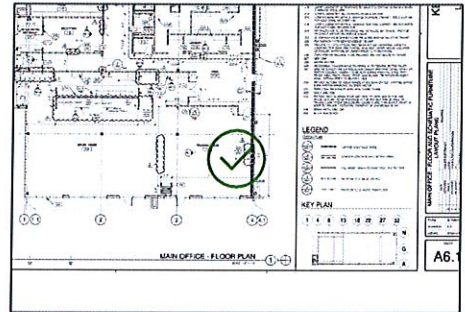
Jun 1, 2022 2:30 PM

### List

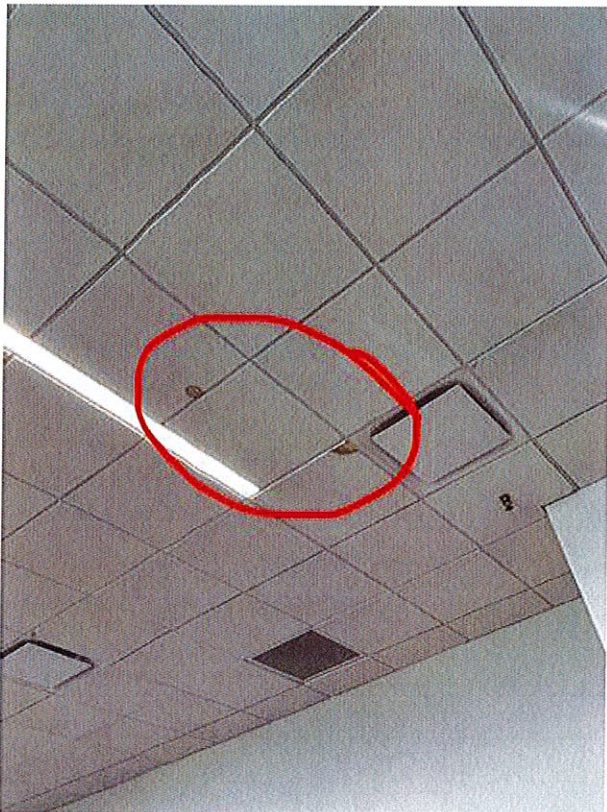
Punch List

### Description

Ceiling tile water stains.



### Photos



20220601\_143005\_photo

Mike Piraino

Jun 1, 2022 2:30 PM

## #37 General

### Status

Open

### Created

Jun 1, 2022 2:30 PM  
mpiraino@waremalcomb.co  
m

### Sheet

A6.1

### Type

Issue

### Last Updated

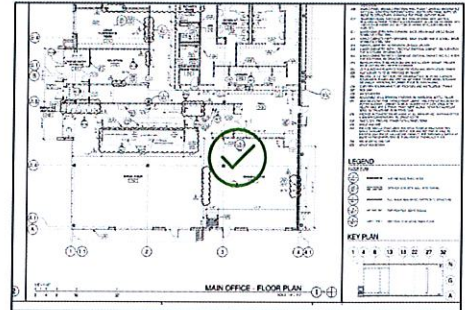
Jun 1, 2022 2:31 PM

### List

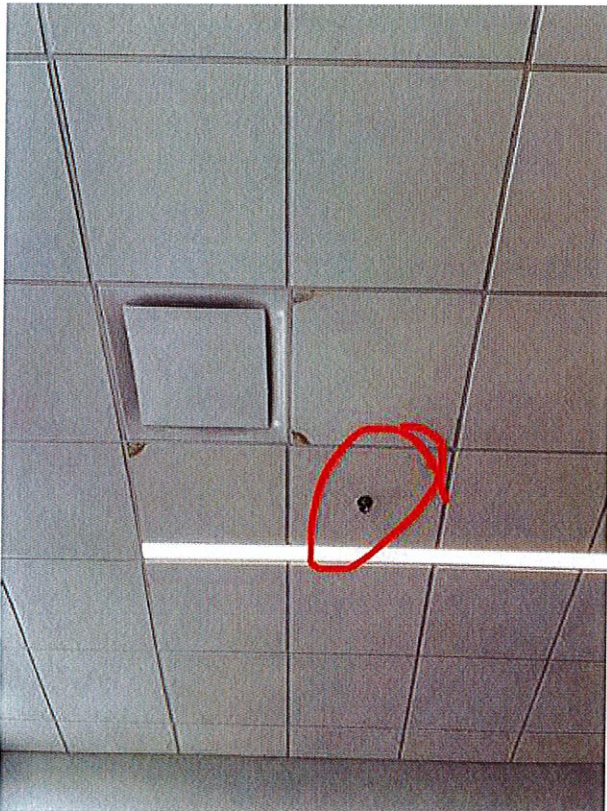
Punch List

### Description

Sprinkler escutcheon  
missing. Tiles with water  
damage.



### Photos



20220601\_143054\_photo

Mike Piraino

Jun 1, 2022 2:31 PM

## #38 General

### Status

Open

### Type

Issue

### List

Punch List

### Description

Patch and paint

### Photos



20220601\_143146\_photo

Mike Piraino

Jun 1, 2022 2:31 PM

### Created

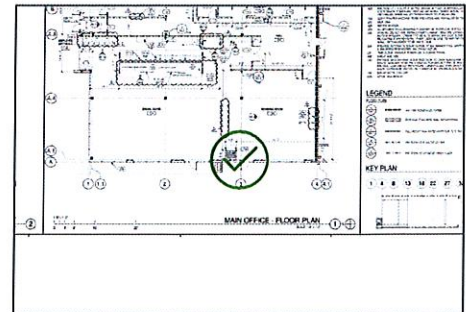
Jun 1, 2022 2:31 PM  
mpiraino@waremalcomb.com

### Last Updated

Jun 1, 2022 2:32 PM

### Sheet

A6.1



## #54 General

Status  
Open

Type  
Issue

List  
Punch List

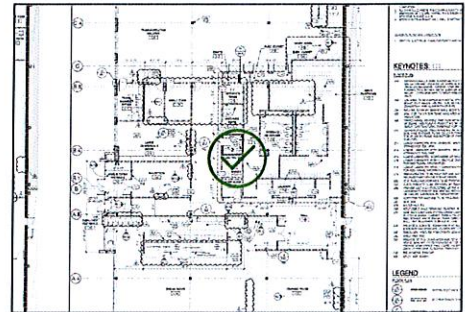
### Description

Pipe behind toilet makes noise after toilet flushes. Sounds like loose pipe.

Created  
Jun 3, 2022 9:38 AM  
mpiraino@waremalcomb.com

Last Updated  
Jun 3, 2022 9:39 AM

Sheet  
A6.1



## #55 General

Status  
Open

Type  
Issue

List  
Punch List

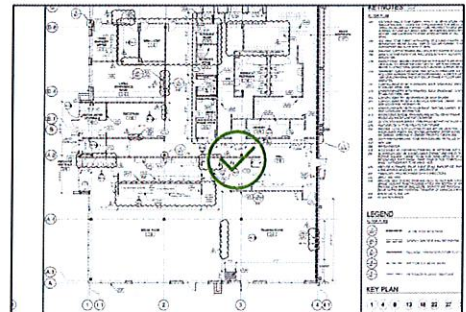
### Description

Trash can spec required. Or alternate trash option to be discussed. I.e.: remove drawers and add doors with slide in cans.

Created  
Jun 3, 2022 9:39 AM  
mpiraino@waremalcomb.com

Last Updated  
Jun 3, 2022 9:41 AM

Sheet  
A6.1



## #56 General

Status

Created

Sheet

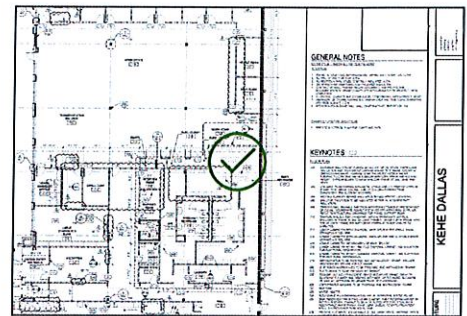
**Open** Jun 3, 2022 9:41 AM  
mpiraino@waremalcomb.co  
m

**Type**  
Issue

**List**  
Punch List

**Description**  
Install lockers.

A6.1



## #57 General

**Status**  
Open

**Type**  
Issue

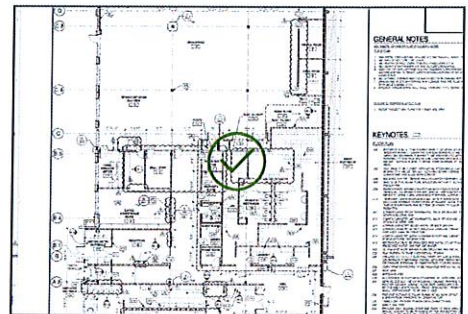
**List**  
Punch List

**Description**  
Install lockers.

**Created**  
Jun 3, 2022 9:42 AM  
mpiraino@waremalcomb.co  
m

**Last Updated**  
Jun 3, 2022 9:42 AM

**Sheet**  
A6.1



## #58 General

**Status**  
Open

**Type**  
Issue

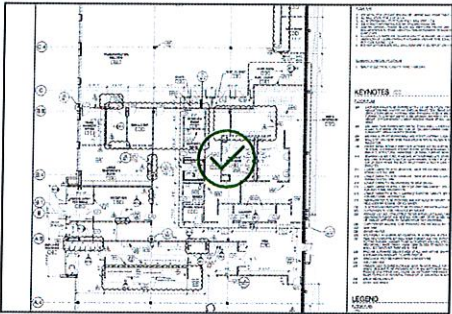
**List**  
Punch List

**Created**  
Jun 3, 2022 9:42 AM  
mpiraino@waremalcomb.co  
m

**Last Updated**  
Jun 3, 2022 9:42 AM

**Sheet**  
A6.1

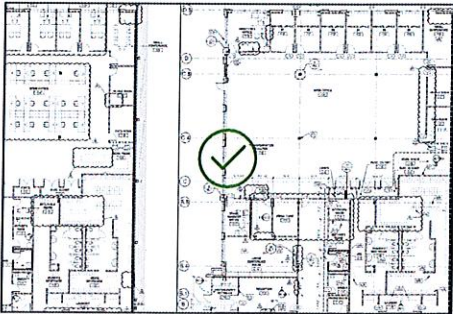
**Description**  
Linear light missing over  
mirror



#59 General

|               |                         |              |
|---------------|-------------------------|--------------|
| <b>Status</b> | <b>Created</b>          | <b>Sheet</b> |
| Open          | Jun 3, 2022 9:43 AM     | A6.1         |
| <b>Type</b>   | mpiraino@waremalcomb.co |              |
| Issue         | m                       |              |
| <b>List</b>   | <b>Last Updated</b>     |              |
| Punch List    | Jun 3, 2022 9:43 AM     |              |

**Description**  
General note. Install blinds.  
Typ thru out



KeHE Dallas

Prepared by Mike Piraino  
Jun 3, 2022

Description

11 tasks in this report.

Contents

#39 General..... 2

#40 General..... 3

#41 General..... 4

#42 General..... 5

#43 General..... 6

#44 General..... 7

#60 General..... 8

#61 General..... 8

#62 General..... 8

#63 General..... 9

#64 General..... 9

## #39 General

### Status

Open

### Created

Jun 1, 2022 3:21 PM  
mpiraino@waremalcomb.com

### Sheet

A6.2

### Type

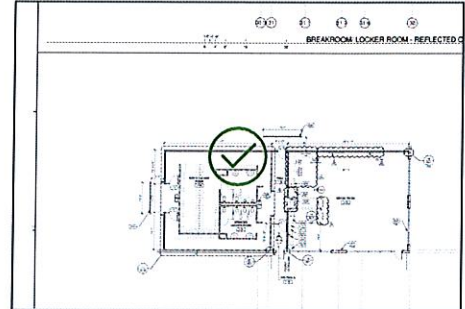
Issue

### Last Updated

Jun 1, 2022 3:22 PM

### List

Punch List



### Description

Patch paint ceiling

### Photos



20220601\_152212\_photo

Mike Piraino

Jun 1, 2022 3:22 PM

## #40 General

### Status

Open

### Created

Jun 1, 2022 3:23 PM  
mpiraino@waremalcomb.com

### Sheet

A6.2

### Type

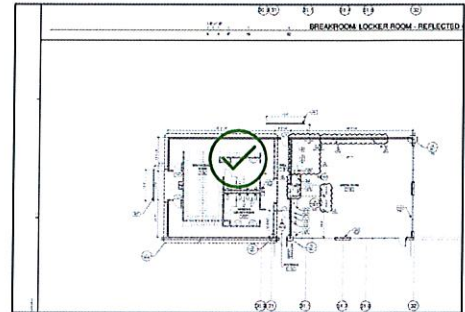
Issue

### Last Updated

Jun 1, 2022 3:23 PM

### List

Punch List



### Description

Install covered at sink

### Photos



20220601\_152325\_photo

Mike Piraino

Jun 1, 2022 3:23 PM

## #41 General

### Status

Open

### Created

Jun 1, 2022 3:24 PM  
mpiraino@waremalcomb.com

### Sheet

A6.2

### Type

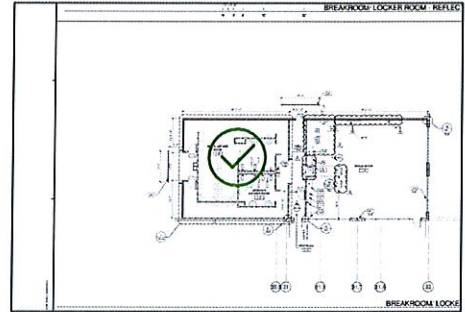
Issue

### Last Updated

Jun 1, 2022 3:25 PM

### List

Punch List



### Description

Epoxy base at end wall

### Photos



20220601\_152459\_photo

Mike Piraino

Jun 1, 2022 3:25 PM

## #42 General

### Status

Open

### Created

Jun 1, 2022 3:28 PM  
mpiraino@waremalcomb.com

### Sheet

A6.2

### Type

Issue

### Last Updated

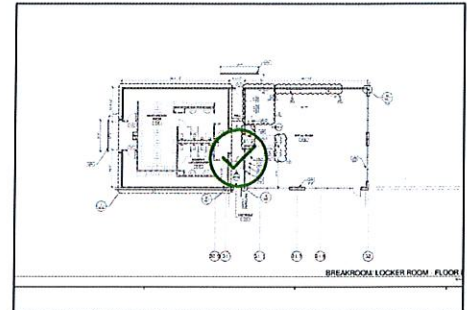
Jun 1, 2022 3:29 PM

### List

Punch List

### Description

Install door



### Photos



20220601\_152911\_photo

Mike Piraino

Jun 1, 2022 3:29 PM

## #43 General

### Status

Open

### Created

Jun 1, 2022 3:29 PM  
mpiraino@waremalcomb.com

### Sheet

A6.2

### Type

Issue

### Last Updated

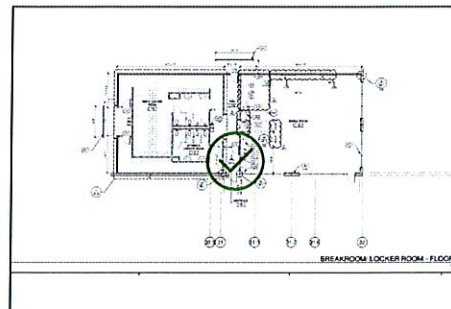
Jun 1, 2022 3:30 PM

### List

Punch List

### Description

Scuffed tiles



### Photos



20220601\_152954\_photo

Mike Piraino

Jun 1, 2022 3:30 PM

## #44 General

### Status

Open

### Created

Jun 1, 2022 3:31 PM  
mpiraino@waremalcomb.co  
m

### Sheet

A6.2

### Type

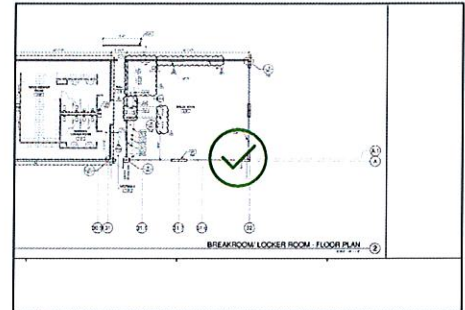
Issue

### Last Updated

Jun 1, 2022 3:32 PM

### List

Punch List



### Description

Repair door. Hinge and closer. Wind issues

### Photos



20220601\_153202\_photo

Mike Piraino

Jun 1, 2022 3:32 PM

## #60 General

**Status**

Open

**Type**

Issue

**List**

Punch List

**Description**

Install linear light fixtures  
over mirror

**Created**

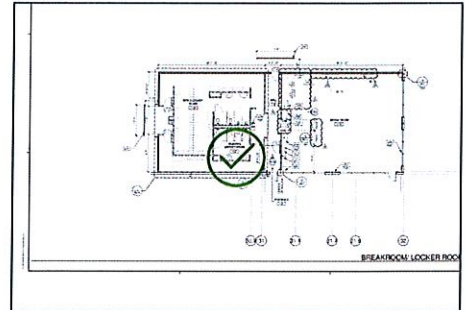
Jun 3, 2022 9:44 AM  
mpiraino@waremalcomb.co  
m

**Last Updated**

Jun 3, 2022 9:45 AM

**Sheet**

A6.2



## #61 General

**Status**

Open

**Type**

Issue

**List**

Punch List

**Description**

Install lockers

**Created**

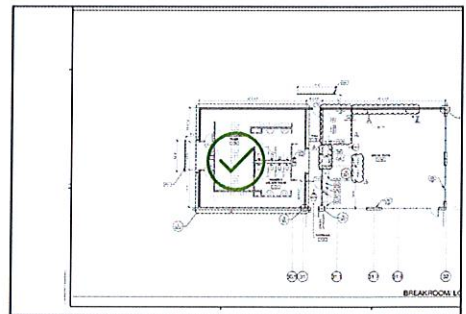
Jun 3, 2022 9:45 AM  
mpiraino@waremalcomb.co  
m

**Last Updated**

Jun 3, 2022 9:45 AM

**Sheet**

A6.2



## #62 General

**Status**

Open

**Type**

Issue

**Created**

Jun 3, 2022 9:45 AM  
mpiraino@waremalcomb.co  
m

**Sheet**

A6.2

**List**

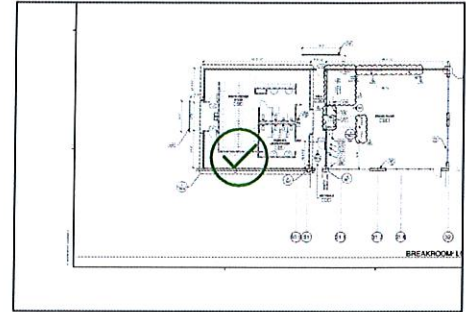
Punch List

**Last Updated**

Jun 3, 2022 9:45 AM

**Description**

Install lockers



**#63 General**

**Status**

Open

**Created**

Jun 3, 2022 9:46 AM  
mpiraino@waremalcomb.com

**Sheet**

A6.2

**Type**

Issue

**Last Updated**

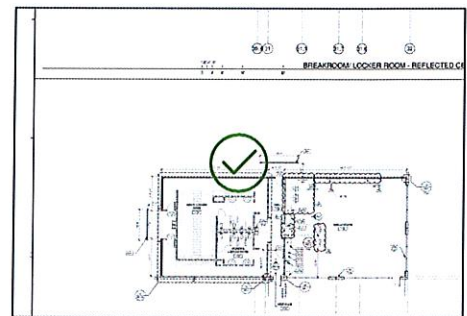
Jun 3, 2022 9:46 AM

**List**

Punch List

**Description**

Align safety rails



**#64 General**

**Status**

Open

**Created**

Jun 3, 2022 9:46 AM  
mpiraino@waremalcomb.com

**Sheet**

A6.2

**Type**

Issue

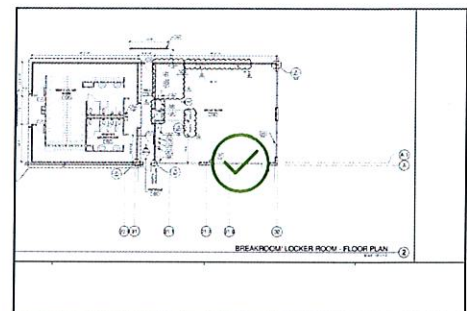
**Last Updated**

Jun 3, 2022 9:47 AM

**List**

Punch List

**Description**



General note. Install blinds  
thru out. Typ.

---

KeHE Dallas

Prepared by Mike Piraino  
Jun 3, 2022

Description

11 tasks in this report.

Contents

#45 General..... 2

#46 General..... 3

#47 General..... 4

#48 General..... 5

#49 General..... 6

#50 General..... 7

#51 General..... 8

#52 General..... 9

#53 General..... 10

#65 General..... 11

#66 General..... 11

## #45 General

### Status

Open

### Created

Jun 1, 2022 3:44 PM  
mpiraino@waremalcomb.com

### Sheet

A6.3

### Type

Issue

### Last Updated

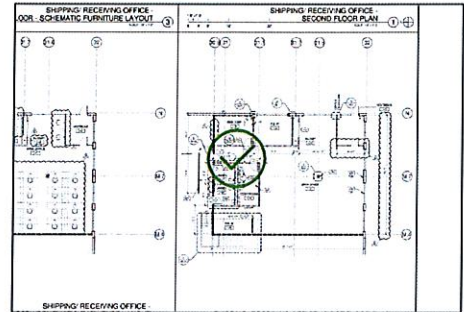
Jun 1, 2022 3:45 PM

### List

Punch List

### Description

Water damaged tile



### Photos



20220601\_154501\_photo

Mike Piraino

Jun 1, 2022 3:45 PM

## #46 General

### Status

Open

### Created

Jun 1, 2022 3:46 PM  
mpiraino@waremalcomb.com

### Sheet

A6.3

### Type

Issue

### Last Updated

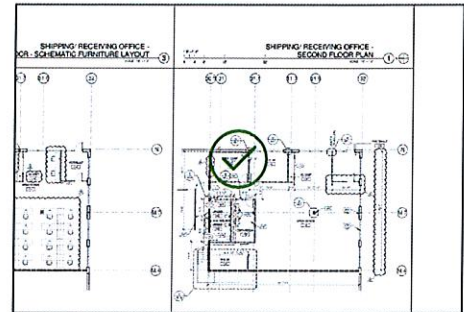
Jun 1, 2022 3:46 PM

### List

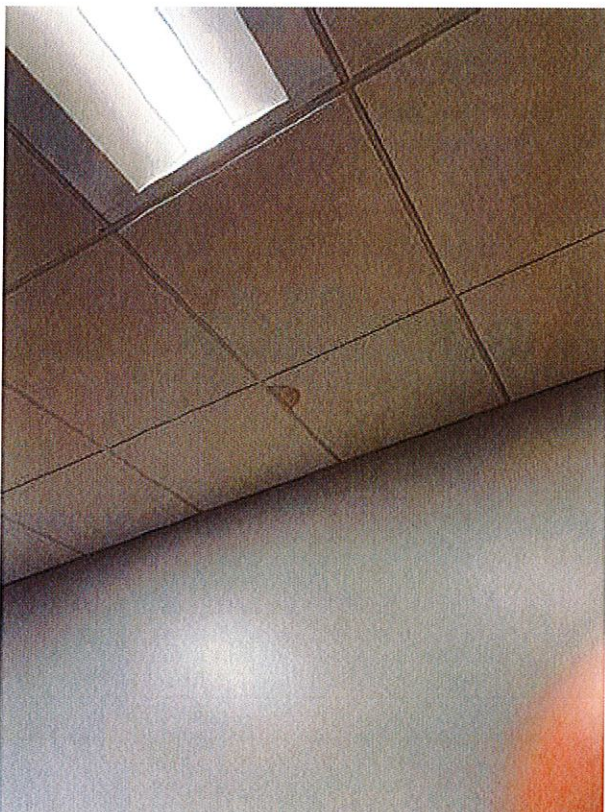
Punch List

### Description

Ceiling tile water damage



### Photos



20220601\_154627\_photo

Mike Piraino

Jun 1, 2022 3:46 PM

## #47 General

### Status

Open

### Created

Jun 1, 2022 3:47 PM  
mpiraino@waremalcomb.com

### Sheet

A6.3

### Type

Issue

### Last Updated

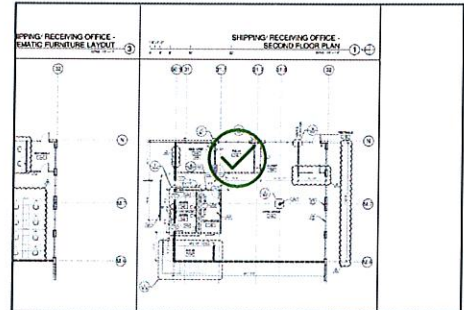
Jun 1, 2022 3:48 PM

### List

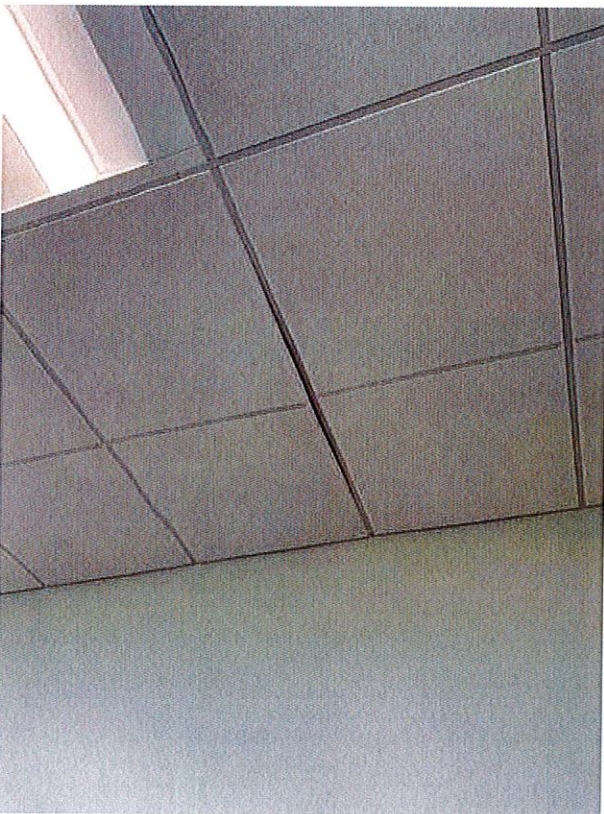
Punch List

### Description

Ceiling tile hanging.



### Photos



20220601\_154755\_photo

Mike Piraino

Jun 1, 2022 3:47 PM

## #48 General

### Status

Open

### Created

Jun 1, 2022 3:48 PM  
mpiraino@waremalcomb.com

### Sheet

A6.3

### Type

Issue

### Last Updated

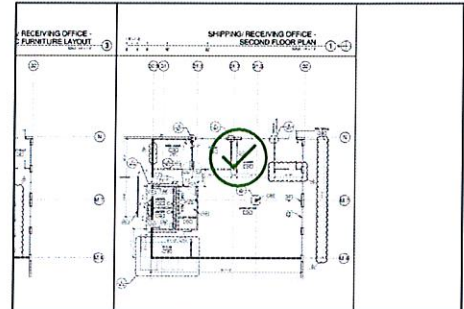
Jun 1, 2022 3:49 PM

### List

Punch List

### Description

Patch wall. Install slider



### Photos



20220601\_154919\_photo

Mike Piraino

Jun 1, 2022 3:49 PM

## #49 General

### Status

Open

### Created

Jun 1, 2022 3:49 PM  
mpiraino@waremalcomb.com

### Sheet

A6.3

### Type

Issue

### Last Updated

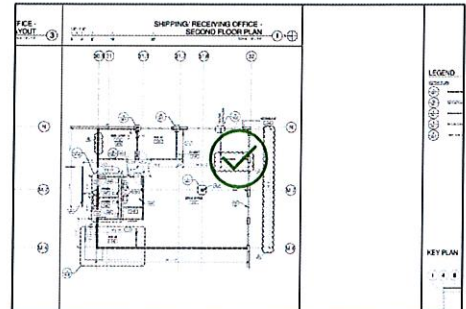
Jun 1, 2022 3:50 PM

### List

Punch List

### Description

Install missing door



### Photos



20220601\_155010\_photo

Mike Piraino

Jun 1, 2022 3:50 PM

## #50 General

### Status

Open

### Created

Jun 1, 2022 3:50 PM  
mpiraino@waremalcomb.com

### Sheet

A6.3

### Type

Issue

### Last Updated

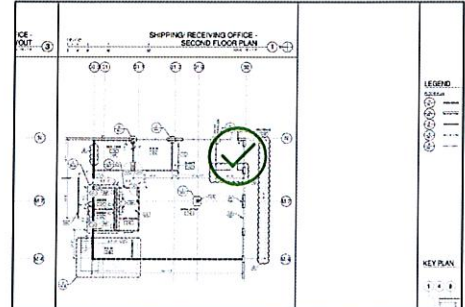
Jun 1, 2022 3:50 PM

### List

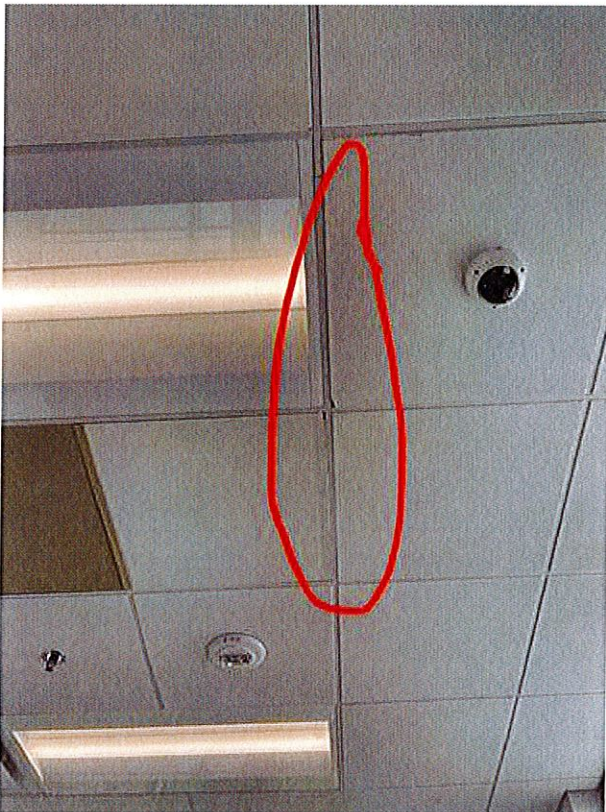
Punch List

### Description

Damaged tiles



### Photos



20220601\_155048\_photo

Mike Piraino

Jun 1, 2022 3:50 PM

## #51 General

### Status

Open

### Created

Jun 1, 2022 3:51 PM  
mpiraino@waremalcomb.com

### Sheet

A6.3

### Type

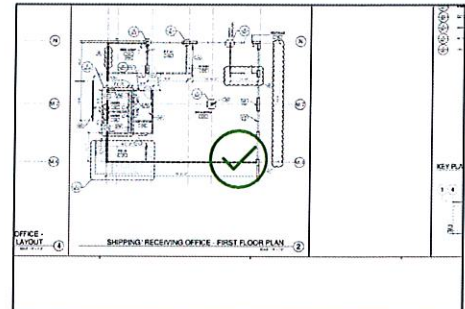
Issue

### Last Updated

Jun 1, 2022 3:51 PM

### List

Punch List



### Description

Replace tile

### Photos



20220601\_155136\_photo

Mike Piraino

Jun 1, 2022 3:51 PM

## #52 General

### Status

Open

### Type

Issue

### List

Punch List

### Description

Replace tile

### Created

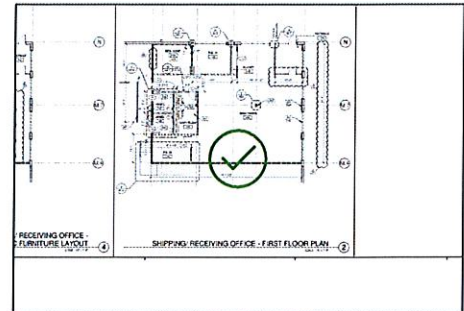
Jun 1, 2022 3:52 PM  
mpiraino@waremalcomb.com

### Last Updated

Jun 1, 2022 3:52 PM

### Sheet

A6.3



### Photos



20220601\_155222\_photo

Mike Piraino

Jun 1, 2022 3:52 PM

## #53 General

### Status

Open

### Created

Jun 1, 2022 3:54 PM  
mpiraino@waremalcomb.com

### Sheet

A6.3

### Type

Issue

### Last Updated

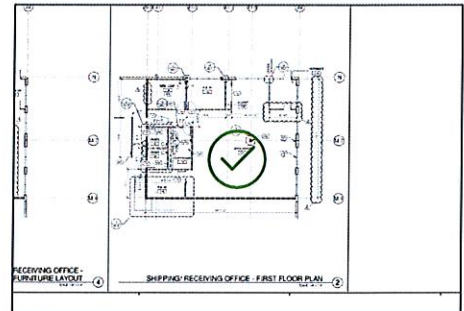
Jun 1, 2022 3:54 PM

### List

Punch List

### Description

Reset tile



### Photos



20220601\_155426\_photo

Mike Piraino

Jun 1, 2022 3:54 PM

## #65 General

### Status

Open

### Type

Issue

### List

Punch List

### Description

General note. Install blinds thru out. Typ.

### Created

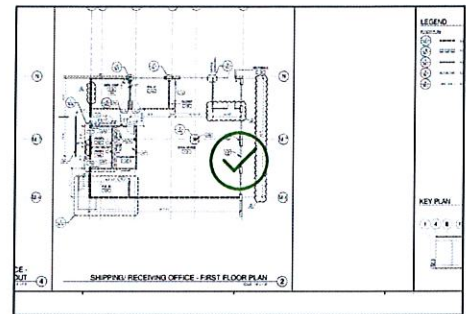
Jun 3, 2022 9:47 AM  
mpiraino@waremalcomb.com

### Last Updated

Jun 3, 2022 9:48 AM

### Sheet

A6.3



## #66 General

### Status

Open

### Type

Issue

### List

Punch List

### Description

General note. Install shades thru out. Typ.

### Created

Jun 3, 2022 9:48 AM  
mpiraino@waremalcomb.com

### Last Updated

Jun 3, 2022 9:48 AM

### Sheet

A6.3

